

TWHEELS

Foldable Electric Bike User Manual



Table of Contents

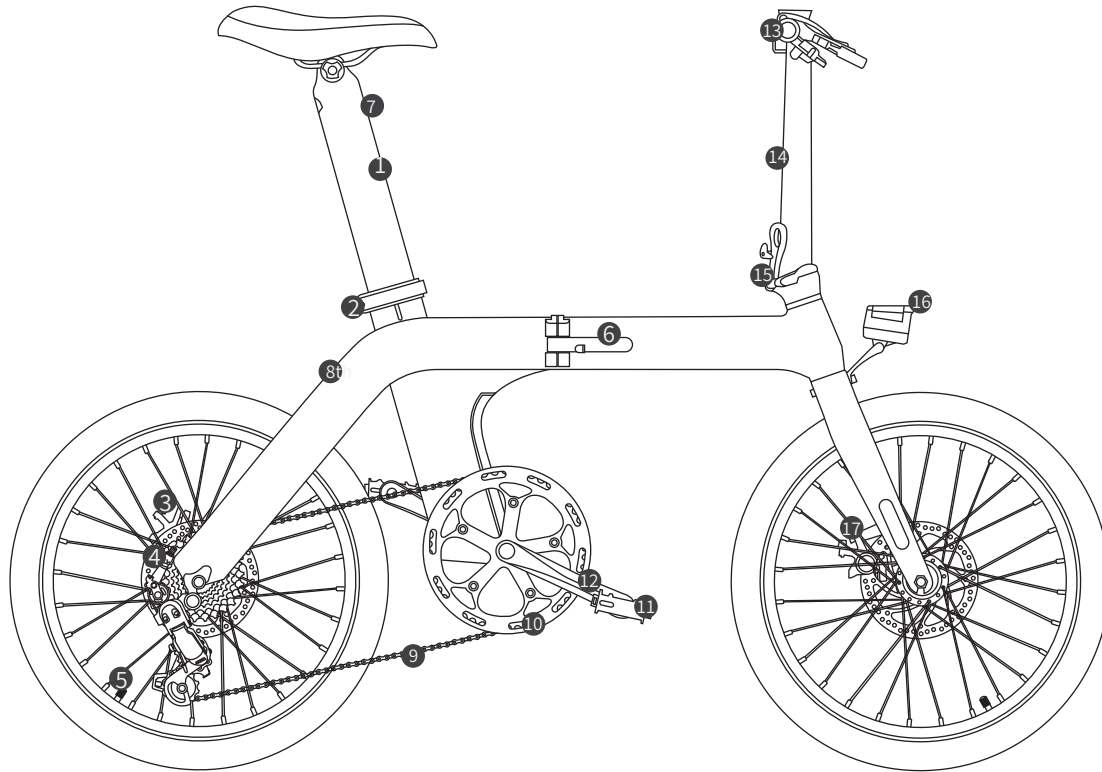
- I. Important note
- II. Bicycle diagram
- III. Instructions for Unfolding
- IV. Folding Instructions
- v. Specification

I. Important note

This user manual contains important information about safety, performance and our service. Please be sure to read the following warnings before using our products for the first time.

- a) If you rent your e-bike to other people, please ensure that they have read this user manual to reduce the safety risk.
- b) Please put on a suitable and safe helmet before riding and wear clothing with luminous and reflective stripes when riding at night. Obey traffic rules and do not exceed speed limits, which can lead to accidents.
- c) Avoid touching the charging port of the bike with metal as this may cause a short circuit.
- d) When charging the e-bike, please make sure that there are no foreign objects in the charging port. Connect the charger to the bike first and then to the power source to avoid possible sparking.
- e) Avoid exposing the e-bike to direct sunlight or rain for a long time and protect it from high temperatures or corrosive gases to avoid chemical corrosion on the painted surfaces and damage to the electrical parts avoid operations that can lead to disruptions and accidents.
- f) Keep the device fully charged and turn it off when not driving for a long time, otherwise the battery will discharge. This can lead to damage to the device.
- g) Your current insurance may not cover the situation that you can get into when riding an e-bike. Please contact your insurance company for appropriate consultation.
- h) As a rule, you have to be 16 years old to ride an e-bike. Please comply with local laws and regulations if you use this product in your country.
- i) The bicycle is a vehicle with certain risks. During emergency braking, brake the rear wheel first and then the front wheel. In particular
If the driving speed is too high, you may fall over if you suddenly apply the front brake. Please drive carefully.
If you want to achieve the maximum mileage in continuous operation:
 - 1. Please use assistance mode.
 - 2. Apply the brake carefully, e.g. when necessary for safety reasons, and do not use the throttle to start the bike.
 - 3. Do not overload the bike.
 - 4. Check the tire pressure before driving and ensure there is sufficient pressure.

II. Bicycle Diagrams



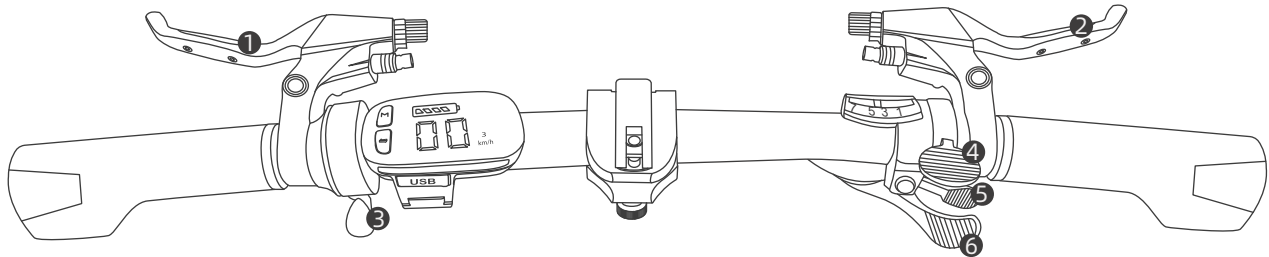
1. Removable battery
2. Quick release lever
3. Brake disc
4. Wheel hub motor

5. Valve
6. Folding system
7. Charging port
8. Control unit

9. Chain
10. Sprocket
11. Pedals
12. Crank

13. Handlebar
14. Shaft stem
15. Folding system
16. Headlights

17. Brake disc



1. Front brake

2. Rear brake

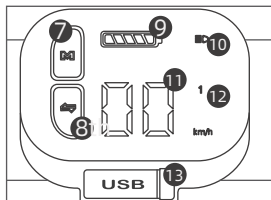
3. Bell

4. Acceleration button

5. 7 Circuit up

6. 7 Circuit down

(Attention: The bike will automatically turn off if not used within 10 minutes.)



7. Power button

- ① 3 sec. press: to switch on/off the "Power Assisted" mode
- ② 1 sec. hold: switch on/off the front and rear lights

8. "Power Assisted" shift button

(Click to change level, total 3 modes)

9. Battery status indicator

(Shows the current charge status of the battery)

10. Light symbol

(Lighting up means front and rear lights are on)

11. Speed display

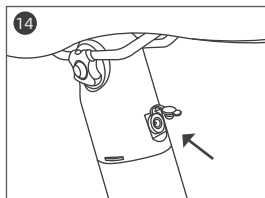
(Shows current speed)

12. "Power Assisted" circuit display

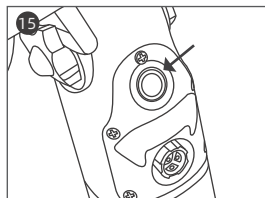
(Shows the current "Power Assisted" mode)

13. USB port

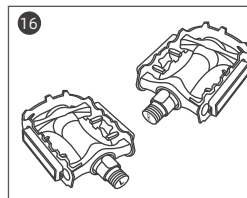
(Use for emergencies only)



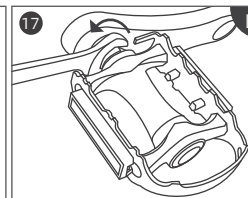
14. Battery charging port
(below the seat)



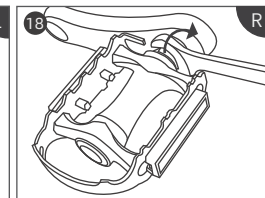
15. On/Off button
(As soon as it is turned on, the taillight also turns on)



16. Pedals



17. Left



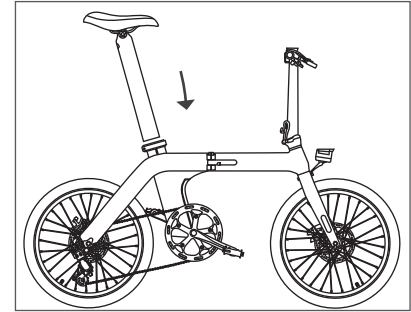
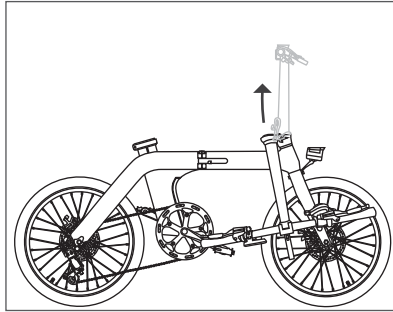
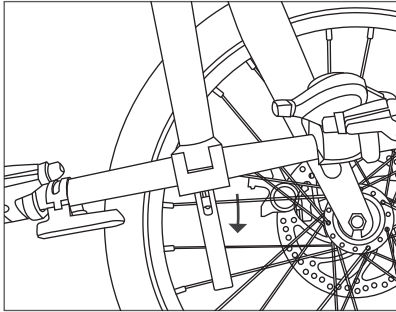
18. Right

Use a 15mm wrench to screw the pedal axle into the screw hole, and tighten it in the direction of the arrow (left counterclockwise, right clockwise, as shown).

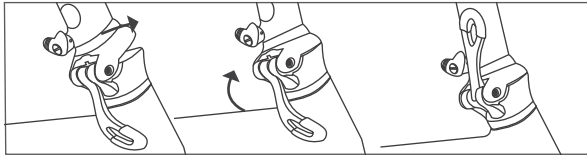
(Note: Pay attention to left and right when installing the pedal.)

III. Unfolding Instructions

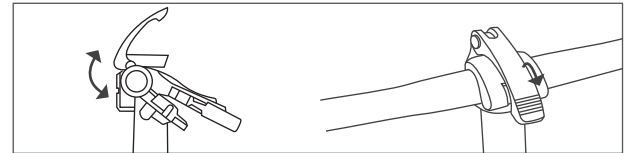
1. Unfold the bicycle frame into an upright position and attach the frame folding handle and safety latch.
2. Unfold the handlebar tube to the upper position, lock the raised tube and tighten the locking bracket. Bring the T-handlebar into the riding position.
3. To place the seat post clamp in the correct position, you must first open the clamp on the frame, insert the post and align the tube to the marked locations on the post. Adjust the height of the bike seat until you find the perfect seating position, then tighten the seat post clamp to lock it in place.



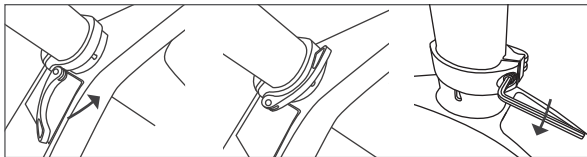
4. For your safety, make sure that the following points are in order before riding: frame/seat/handle tube locking positions, brake system functionality, tire pressure, battery charge and your safety equipment. Attention: Both the climbing height and the seat support tube are marked with a Max or Min. For safety reasons, you should use them in a safe area.



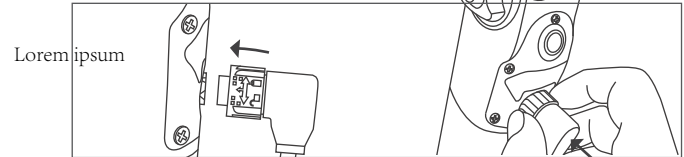
Locking and unlocking the steering tube



Adjustment of the handle



Attention: Make sure that the seat post clamp is fitted and tightened to load it.



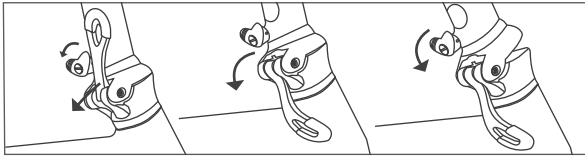
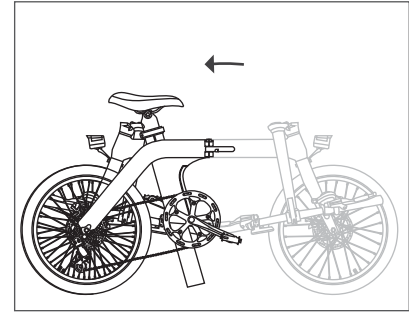
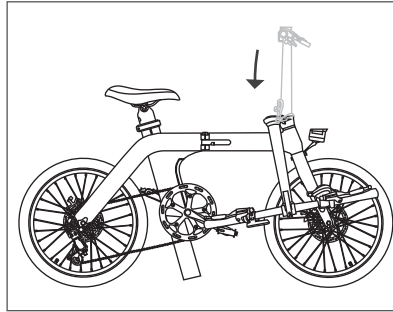
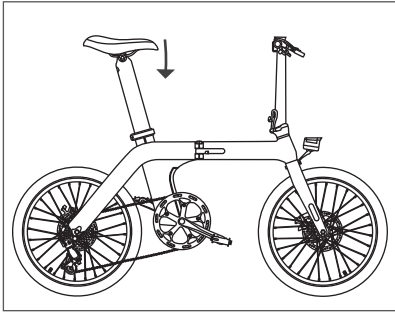
Plug in to charge

IV. Folding Instructions

Step 1. Release the lock on the underside of the seat post, carefully lower the saddle to the ground and close. Then use the clamp to secure it.

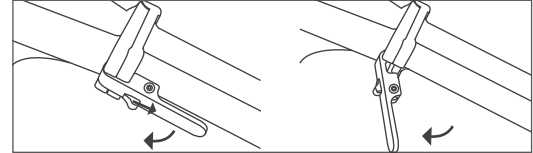
Step 2. Release the lock at the bottom of the handlebar and then carefully fold the bike and handlebars down.

Step 3. Open the lock in the middle of the bike frame and fold in half.



closed

open



closed

open

V. Specification

Max. load weight	120kg
Maximum speed	25km/h
Maximum range	Motor supports up to 80KM
Battery pack	High quality battery 36V 11.6Ah
Battery customization	DC 42V 2A
Recharge time	7 hours
Advertisement	LCD display
Drive type	Rear wheel drive
Frame material	Aluminum alloy
Front brake	Mechanical disc brakes
Brake type	Mechanical disc brakes
Chain set	Prowheel made of steel with 52 teeth
Gears	Shimano 7-speed gearbox
Chain	KMC Z7
Rear brake	Mechanical disc brakes
Performance	250W
Rims	Alloy
Wheel size	50.8cm
Wheel size	50.8cm x 4.45cm
Net weight	17.5kg (with battery)
Size when unfolded	148cm x 57cm x 110cm
Foldable size	89cm x 74cm x 40cm

* The above data allows 5% manufacturing tolerance.

* After receiving the goods, there may be differences between the individual accessories and the drawings as the production lots are different and do not affect use.